

# Acetone Dye Color Chart

Acetone Dye is a solvent based translucent dye formulated to add bold color and aesthetic value to interior cured concrete surfaces. It penetrates the surface of freshly placed or existing concrete to produce a pigmented layer that will not crack, chip or peel. It is packaged in pre-mixed and ready to use containers.

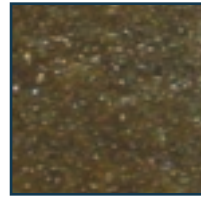
Acetone Dye is available in any of the colors shown (right). In addition, these colors may be combined to produce an unlimited range of color combinations\*.

**Please allow two weeks lead time  
for orders to be processed.**

\*Customer is responsible for mixing to produce custom colors.



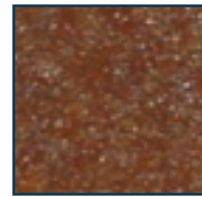
TK Products  
11400 West 47th Street  
Minnetonka, MN 55343  
(800)441-2129  
[www.tkproducts.com](http://www.tkproducts.com)



Walnut



Midnight



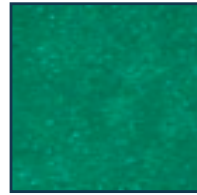
Chestnut



Eggplant



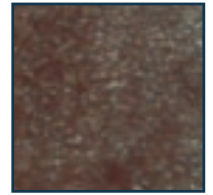
Caribbean Blue



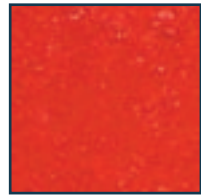
Moss Green



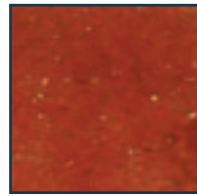
Earthy Brown



Coffee



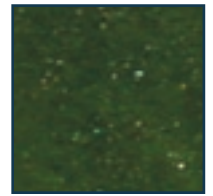
Cherry Tomato



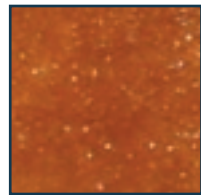
Redwood



Lime Zest



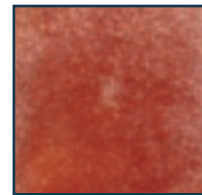
Spruce



Red Clay



Desert Sand



Rust



Orange Peel

**Important Note:** The samples, shown above, are representations of the final color results that one may achieve when using this product. The final color may vary depending upon the type of concrete, the porosity and finish of the surface, the concrete's age and curing method, and the application rate used to apply the product. The color samples above are meant as representations ONLY and do not guarantee final color results.

Please see the corresponding technical data guide, material safety data sheet (MSDS), or your TK Products representative for more information.